



**SARAH  
HOMES**

HOUSE & LAND  
NORMANVILLE



## MCCUBBIN 120

from:

**\$324,433**

Lot Size: 560m<sup>2</sup>



Corner James & Edwards St Normanville

2700 ceilings

Built in robes

Attached carport

Large kitchen including island bench, overhead cupboards,  
900mm wide stainless-steel appliances, large walk in pantry

Large front hardwood deck and veranda

Slab footing allowance. (no steps ideal for retirement)

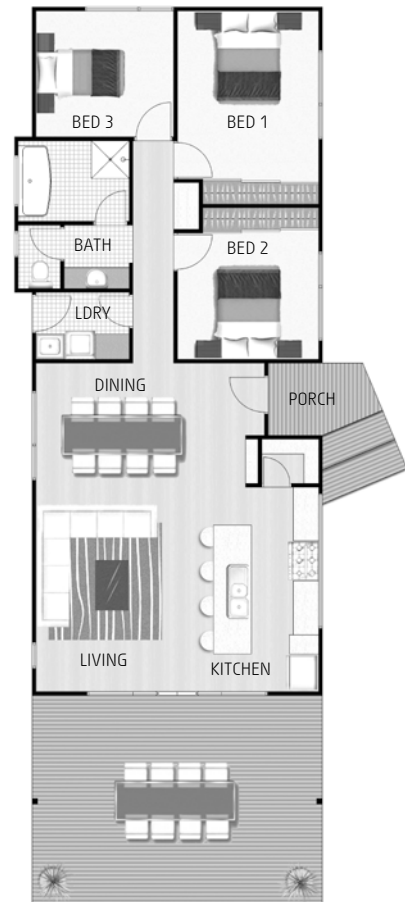
Split system Air conditioning plus energy saving glass to windows

STED holding tank plus service connections

Contour & Soil reports included

Instantaneous 27 litres/minute gas hot water service

Additional designs available



for more information please contact our Sarah Homes consultant

**PAULA EDWARDS 0417 803 237**

Land details: Garry O'Loughlin 0436 027 606

Copley First National Real Estate Normanville RLA 234582



WWW.SARAHHOMES.COM.AU 158 RAILWAY TERRACE, MILE END SA 5031, P(08) 8301 8333 INFO@SARAHHOMES.COM.AU

Images are shown for illustrative purposes and may not represent the final product. Price excludes air conditioning, floor coverings, window treatments, paving, retaining walls (if required), landscaping or fencing. Final price will vary depending on selections, engineering, council requirements and adjustments to allowances. All sales and contracts are subject to final council and developer approval. The land referred to in this house and land package is not owned by Sarah Homes and we make no representations about the suitability of the land to build on or otherwise. \*Visit [www.sarahhomes.com.au](http://www.sarahhomes.com.au) for more information. BLDI75837