



**SARAH
HOMES**

HOUSE & LAND
ECHUNGA



DRYSDALE 3E

from:

\$437,249

Lot Size: 753m²



7 Gratwick street, Echunga 5153

2700mm ceiling height

Built-in robes to all bedrooms

Large kitchen including island bench, overhead cupboards, stainless steel appliances and large walk-in pantry

Master bedroom includes a generous ensuite with designer tapware and vanities

Floor coverings

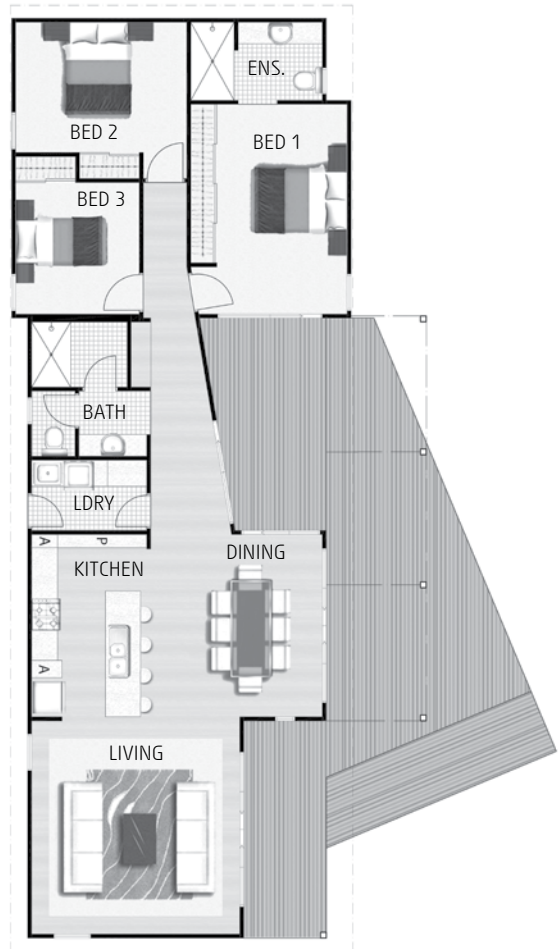
Split system air-conditioning

Hardwood decking

Single carport

Instantaneous 27 litres/minute gas hot water service

Allowance for service connections including to CWMS



for more information please contact our Sarah Homes consultant

KATINA PANAGIOTOU 0409 161 158

Katina@lshg.com.au

Land details: Vonnie Anderson 0427 166 663
Adelaide Hills Real Estate, Mount Barker RLA 163271



WWW.SARAHHOMES.COM.AU 158 RAILWAY TERRACE, MILE END SA 5031, P(08) 8301 8333 INFO@SARAHHOMES.COM.AU

Images are shown for illustrative purposes and may not represent the final product. Price excludes air conditioning, floor coverings, window treatments, paving, retaining walls (if required), landscaping or fencing. Final price will vary depending on selections, engineering, council requirements and adjustments to allowances. All sales and contracts are subject to final council and developer approval. The land referred to in this house and land package is not owned by Sarah Homes and we make no representations about the suitability of the land to build on or otherwise. *Visit www.sarahhomes.com.au for more information. BLDI75837