



**SARAH  
HOMES**

HOUSE & LAND  
FREELING



## PAVILION 145

from:

**\$348,730**

Lot Size: 770m<sup>2</sup>



2 Derby Street, Freeling, SA

All designs can be modified:

Three bedrooms, two separate living areas, two bathrooms, open plan living, meals & kitchen area. Built in robes to master bedroom.

Ceiling height 2700mm with raked ceiling to living and dine

Attached double carport

Large kitchen including island bench, overhead cupboards, 900mm stainless steel appliances, pantry, EssaStone bench tops.

Veranda & hardwood decking with pergola.

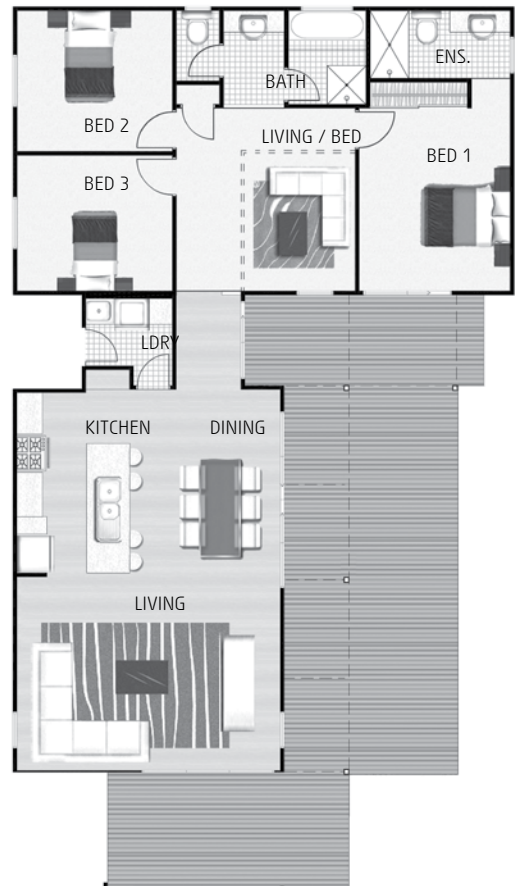
Site works allowance and Services.

Aerobic Waste System

Instantaneous 27 litres/minute gas hot water service

Skillion roof

Air conditioning (Split Wall Mounted) and Floor Coverings.



for more information please contact our Sarah Homes consultant

**PAUL LATTIN 0439 249 320**

Land details: Julia Smith 0427 605 059

Elders Barossa RLA 239205



WWW.SARAHHOMES.COM.AU 158 RAILWAY TERRACE, MILE END SA 5031, P(08) 8301 8333 INFO@SARAHHOMES.COM.AU

Images are shown for illustrative purposes and may not represent the final product. Price excludes air conditioning, floor coverings, window treatments, paving, retaining walls (if required), landscaping or fencing. Final price will vary depending on selections, engineering, council requirements and adjustments to allowances. All sales and contracts are subject to final council and developer approval. The land referred to in this house and land package is not owned by Sarah Homes and we make no representations about the suitability of the land to build on or otherwise. \*Visit [www.sarahhomes.com.au](http://www.sarahhomes.com.au) for more information. BLDI75837