



**SARAH  
HOMES**

HOUSE & LAND  
VICTOR HARBOR



## ROBERTS 2 STOREY

from:

**\$500,000**

Lot Size: 539m<sup>2</sup>



2



Lot 2, 65-67 Seaview Road, Victor Harbor

*Breathtaking views over Victor Harbor*

2700mm high ceiling to both upper and lower storeys

Raked and vaulted ceiling to living

Generous double garage

Large kitchen including island bench, overhead cupboards and stainless-steel appliances

Built-in robes to all bedrooms, master bedroom with walk-in robe and generous ensuite with designer tapware and vanities

Modern hybrid laminate flooring

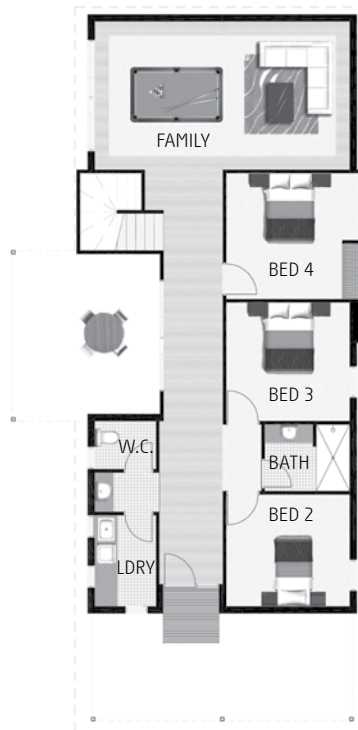
Daikin ducted air-conditioning

Generous verandah & hardwood decking with timber and stainless-steel wire balustrade

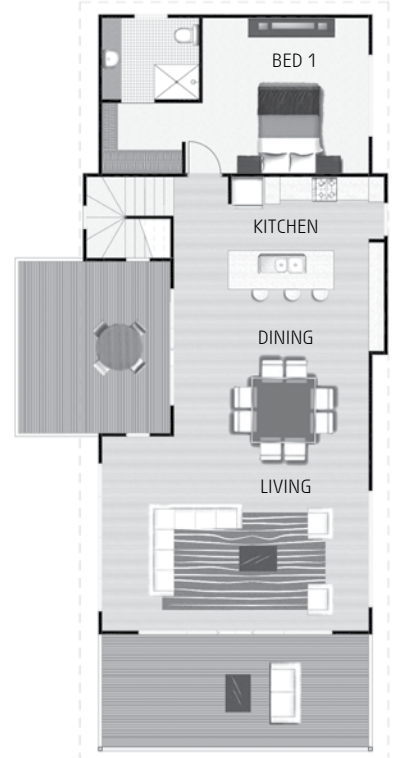
Alternative floorplans available

for more information please contact our Sarah Homes consultant

**CARMEN WRIGHT 0414 239 016**



UPPER  
LEVEL



LOWER  
LEVEL

Land details: Paul Smith 0417 624 833  
Elders Real Estate, Victor Harbor RLA 62833



WWW.SARAHHOMES.COM.AU 158 RAILWAY TERRACE, MILE END SA 5031, P(08) 8301 8333 INFO@SARAHHOMES.COM.AU

Images are shown for illustrative purposes and may not represent the final product. Unless listed price excludes air conditioning, floor coverings, window treatments, paving, retaining walls (if required), landscaping or fencing. Final price will vary depending on selections, engineering, council requirements and adjustments to allowances. All sales and contracts are subject to final council and developer approval. The land referred to in this house and land package is not owned by Sarah Homes and we make no representations about the suitability of the land to build on or otherwise. \*Visit [www.sarahhomes.com.au](http://www.sarahhomes.com.au) for more information. BLD175837