



**SARAH  
HOMES**

HOUSE & LAND  
VICTOR HARBOR



## WHITELEY 2 STOREY 180

from:

**\$460,000**

Lot Size: 557m<sup>2</sup>



Lot 1, 65-67 Seaview Road, Victor Harbor

Breathtaking views over Victor Harbor

2700mm high ceilings to upper and lower storeys

Generous double garage

Daikin ducted air-conditioning

Large kitchen including island bench, overhead cupboards and stainless-steel appliances

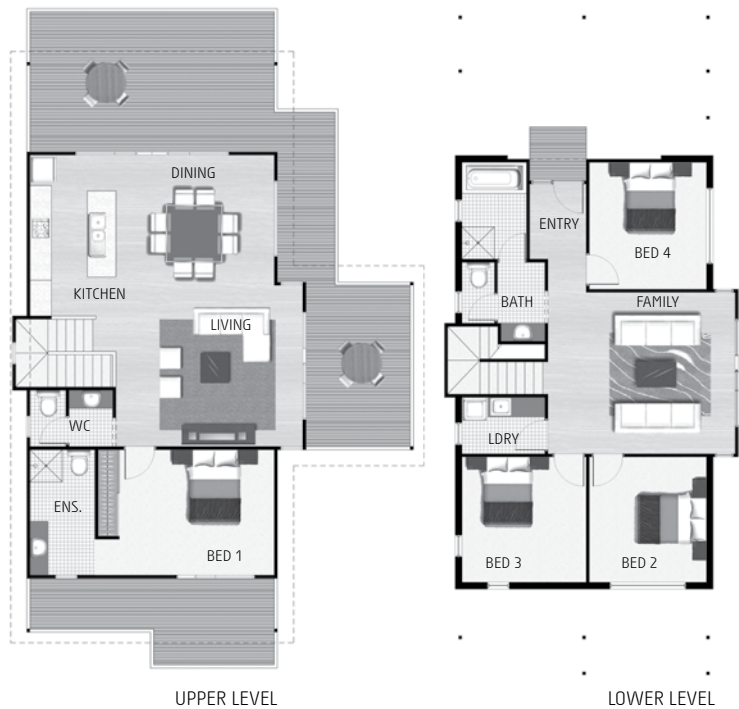
Built-in robes to all bedrooms, master bedroom including a generous ensuite with designer tapware and vanities

Modern hybrid laminate flooring

Generous verandah to take in the views & hardwood decking with timber and stainless-steel wire balustrade

Instantaneous 27 litres/minute gas hot water service

Alternative floorplans available



for more information please contact our Sarah Homes consultant

**CARMEN WRIGHT 0414 239 016**

Land details: Paul Smith 0417 624 833

Elders Real Estate, Victor Harbor RLA 62833



WWW.SARAHHOMES.COM.AU 158 RAILWAY TERRACE, MILE END SA 5031, P(08) 8301 8333 INFO@SARAHHOMES.COM.AU

Images are shown for illustrative purposes and may not represent the final product. Price excludes air conditioning, floor coverings, window treatments, paving, retaining walls (if required), landscaping or fencing. Final price will vary depending on selections, engineering, council requirements and adjustments to allowances. All sales and contracts are subject to final council and developer approval. The land referred to in this house and land package is not owned by Sarah Homes and we make no representations about the suitability of the land to build on or otherwise. \*Visit [www.sarahhomes.com.au](http://www.sarahhomes.com.au) for more information. BLDI75837