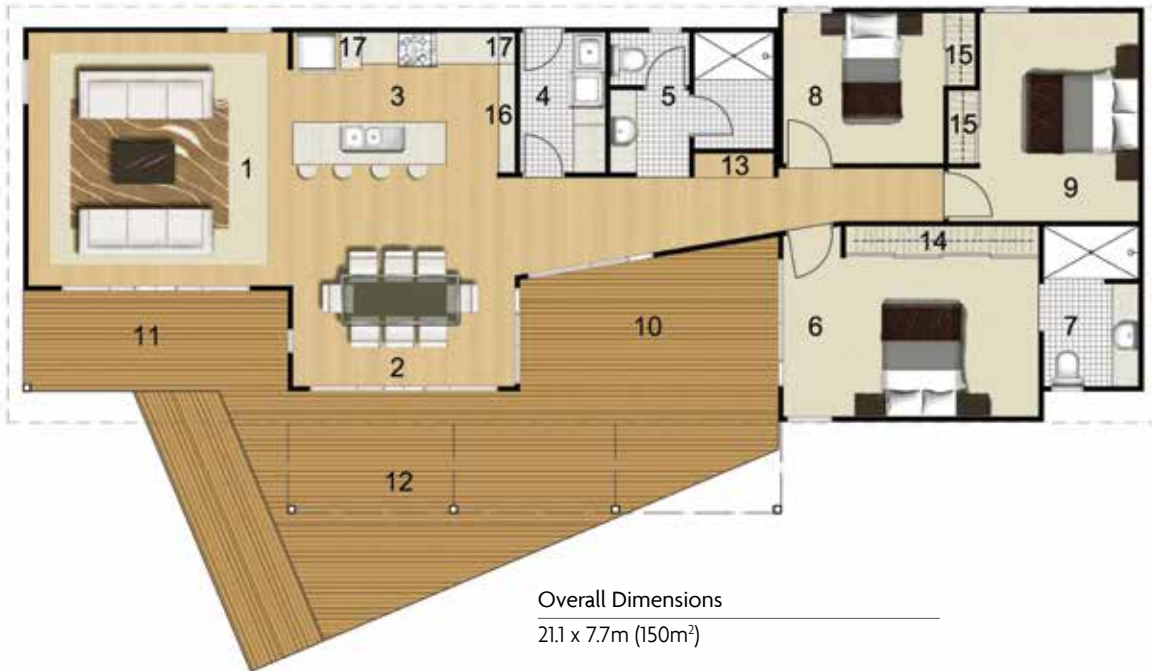


# DRYSDALE 3E



### Overall Dimensions

21.1 x 7.7m (150m<sup>2</sup>)

- |                          |   |
|--------------------------|---|
| 1. Living – 4.9 x 4.8m   | 10. Alfresco – 4.9 x 2.9m (max)               |
| 2. Dining – 4.2 x 3.9m   | 11. Porch – 5.0 x 1.9m                        |
| 3. Kitchen – 4.2 x 2.8m  | 12. Decking (optional)<br>– 10.4 x 4.7m (max) |
| 4. Laundry – 1.6 x 2.7m  | 13. Linen Provision                           |
| 5. Bathroom – 3.1 x 2.7m | 14. Robe Provision                            |
| 6. Bed 1 – 4.8 x 3.6m    | 15. Robe Provision (optional)                 |
| 7. Ensuite – 1.8 x 3.0m  | 16. Pantry Provision (optional)               |
| 8. Bed 3 – 3.6 x 2.9m    | 17. Appliance Provision (optional)            |
| 9. Bed 2 – 3.6 x 3.9m    |   |