

# Hayborough 2 Storey



Illustration of **Hayborough 2 Storey Traditional**

Phone **08 8301 8333**



Illustration of **Hayborough 2 Storey Contemporary**

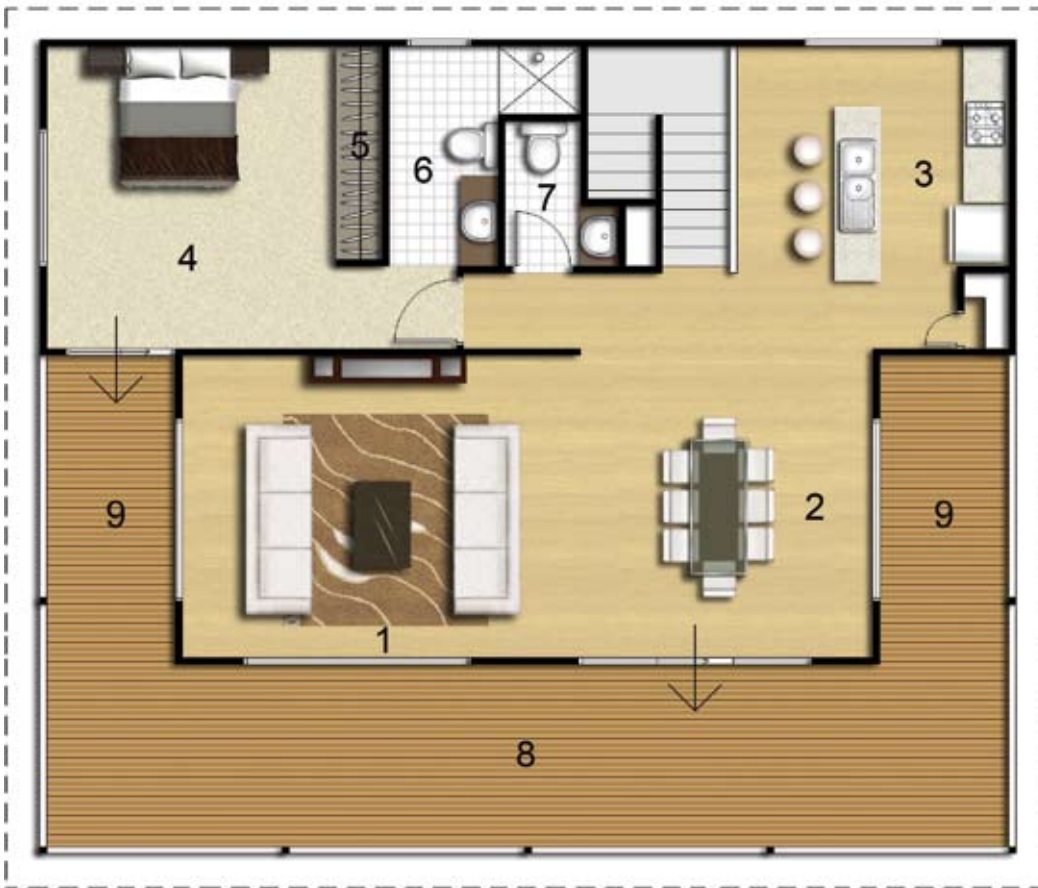
## Hayborough 2 Storey

TRADITIONAL &  
CONTEMPORARY

12.9 x 8.3m (199m<sup>2</sup>)

### Upper Level

1. Living – 5.3 x 4.0m
2. Dining – 3.9 x 4.0m
3. Kitchen – 3.6 x 4.0m
4. Bed 1 – 4.4 x 4.0m
5. Robe Provision
6. Ensuite – 2.5 x 2.9m
7. WC – 2.0 x 1.9m
8. Balcony under Roof (optional) – 12.9 x 2.5m
9. Balcony under Roof (x2) – 1.8 x 4.1m



Phone **08 8301 8333**

### Lower Level

9. Family – 6.1 x 4.0m
10. Bed 3 – 3.6 x 4.0m
11. Linen
12. Laundry – 2.1 x 1.9m
13. WC – 1.5 x 0.9m
14. Bath – 1.9 x 2.9m
15. Bed 2 – 2.9 x 4.0m
16. Bed 4 – 3.0 x 4.0m

